

## Ethernet Module

- ❖ Add the ELC-Ethernet module and provide Ethernet capability to your ELC SuperRelay.



ELC-Ethernet-DC module  
ELC-Ethernet-AC module



## Cable Modules

- ❖ Two standard communication and configuration interface cables are available: RS232 and USB.

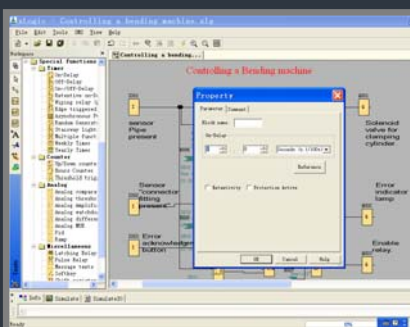


ELC-RS232  
ELC-USB

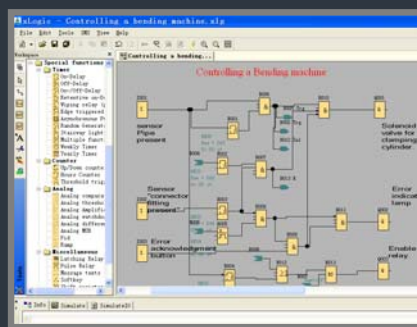


## xLogicSoft

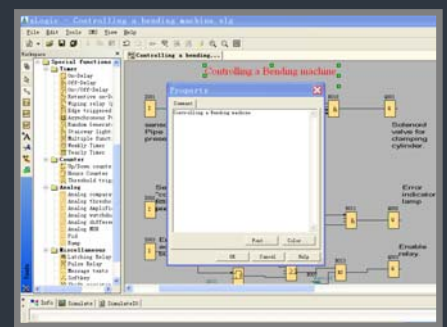
- ❖ Free of charge SuperRelay configuration software.
- ❖ Function Block / Ladder programming.
- ❖ Free upgrades for all future software versions.
- ❖ Library with pre-configured function blocks for ultra fast set-up.
- ❖ On-line Monitor & Off-line Simulation
- ❖ Free Personal Tutorials



Using the dialog boxes, function block parameter setup and modification is a quick and easy task to complete.



Link function blocks to complete your program. Set up as many as 256 (ELC-18) function blocks in one circuit program.



Use the "label tool" to write a comment, instruction or help note on the on the xLogic circuit program screen.

VISIT OUR WEBSITE AT [WWW.PLCSHOP.NL](http://WWW.PLCSHOP.NL) AND DOWNLOAD YOUR THE XLOGICSOFT SOFTWARE & USER MANUAL FOR FREE !